

## New Portable Ladder Standard

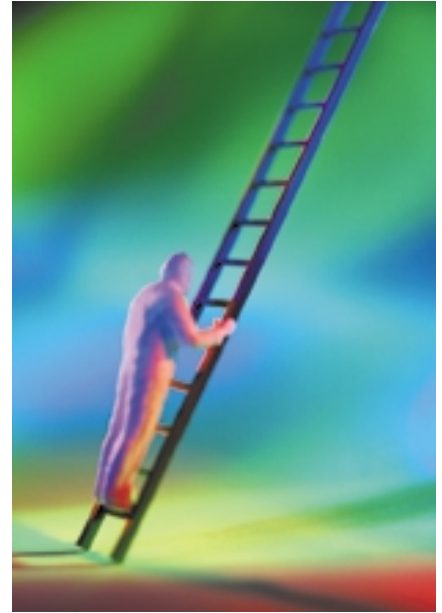
Several years ago when OSHA developed the ladder standard for use by workers on job sites, it based its rule upon American National Standard Institute (ANSI) A14.1-1968 and A14.2-1956. Those ANSI standards prohibit the use of portable ladders rated or warranted for more than 300 pounds. The 300-pound maximum capacity includes the worker and any tools or materials. This began causing problems, as some of our members were exceeding the 300-pound limitation. Some workers were discharged or placed into jobs that did not require them to climb ladders.

The IBEW Safety and Health Department requested that the ANSI A14 Committee develop a ladder that would have a higher maximum capacity so that people would not be prevented from doing the jobs that they were trained to do.


A committee was established that included labor, ladder manufacturers, telecommunication companies, and public members to try to develop a *Special Duty Ladder*. It was decided that a 375-

pound maximum capacity ladder would meet the needs without adding too much weight or making the product too cumbersome.

The ladders are made of fiberglass or metal. There are various types, i.e., portable extension, single, sectional, step, trestle and platform ladders. They also come in various sizes. The new standard, ANSI A14.10, was sent out for public comment and has been approved by the ANSI A14 Committee.



OSHA has issued a letter of interpretation that permits the use of these ladders because they meet the testing criteria of 3.3 to one strength to intended load ratio requirements, and when the ladders are used in accordance with manufacturer's instructions.

This new standard should resolve many of the labor relations issues. 

### IBEW RECEIVES LEAGUE OF SAFETY LEADERS AWARD



The National Safety Council and its Foundation for Safety and Health recently paid tribute to the IBEW and its local unions with a presentation of its 1999 League of Safety Leaders Award for outstanding contributions to increased public and worker safety.

The IBEW was one of seven recipients of the award and the only union so honored. Shown at right is Gerard F. Scannell (left), president of the National Safety Council, presenting the organization's League of Safety Leaders Award to Manuel Mederos, director of the IBEW Safety and Health Department. 